



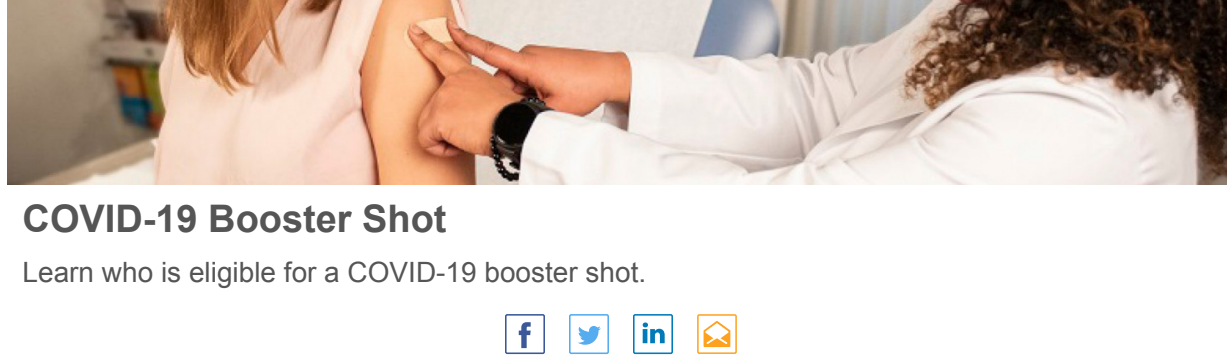
Why is it important to get Boosted?

Studies show after getting vaccinated against COVID-19, protection against the virus and the ability to prevent infection with variants may decrease over time and due to changes in variants.

Although COVID-19 vaccines remain effective in preventing severe disease, recent data suggest their effectiveness at preventing infection or severe illness wanes over time, especially in people ages 65 years and older.

The recent emergence of the Omicron variant further emphasizes the importance of vaccination, boosters, and prevention efforts needed to protect against COVID-19.

Data from clinical trials showed that a booster shot increased the immune response in trial participants who finished a Pfizer-BioNTech or Moderna primary series 6 months earlier or who received a J&J/Janssen single-dose vaccine 2 months earlier. With an increased immune response, people should have improved protection against getting infected with COVID-19. For Pfizer-BioNTech and J&J/Janssen, clinical trials also showed that a booster shot helped prevent severe disease.



COVID-19 Booster Shot

Learn who is eligible for a COVID-19 booster shot.



www.cfsny.org

Important Information - Agency Protocol

As of March 7, NYC will no longer require **proof of vaccination** to be shown for indoor spaces. However, all other vaccine mandates, including the city's requirement for all private-sector workers to be fully vaccinated, remains in place.

So what does this mean for us?

Nothing has changed as far as vaccination requirements. As a reminder, see below for the information on who needs to be vaccinated and what is considered fully vaccinated.

Nothing has changed regarding our requirement for staff who are providing in person services to wear appropriate face coverings at all times. We continue to follow our state oversight agencies and there has been no change as of yet.

In addition, we recommend that staff check the CDC website for rates of transmission based on State and County. This is helpful to see information about where you live, work and/or are planning to travel to so that you can make the best decisions about mask wearing.

	New York City	New Jersey State
Who needs to be fully vaccinated	Everyone	Everyone
How do you define fully vaccinated	2 Pfizer/Moderna 11 & J	2 Pfizer/Moderna + Booster 1 J&J + Booster
Can I request a medical or religious accommodation	Yes. You must submit the attached form and someone from HR will reach out to you. Link below	Yes. You must submit the attached form and someone from HR will reach out to you. Link below
Can I work while I am waiting for my accommodation to be reviewed	Yes - NYC requires a PCR test submitted weekly (by each Friday to work the following week). Send to vaxtestresults@cfsny.org Results must be legible, with individual name, DOB and official results.	NI accepts PCR or Antigen test. Depending on positivity in each region testing must be done either once or twice a week. CFS onsite testing is available or use an outside facility and send results to your supervisor or djoy@cfsny.org

Accommodation Request Procedure

NYC COVID-19 Vaccine Accommodation Request Form



www.cfsny.org

Accommodation Request Procedure

New Jersey COVID-19 Vaccine Accommodation Form



www.cfsny.org

How are COVID Levels in your area?



Centers for Disease Control and Prevention

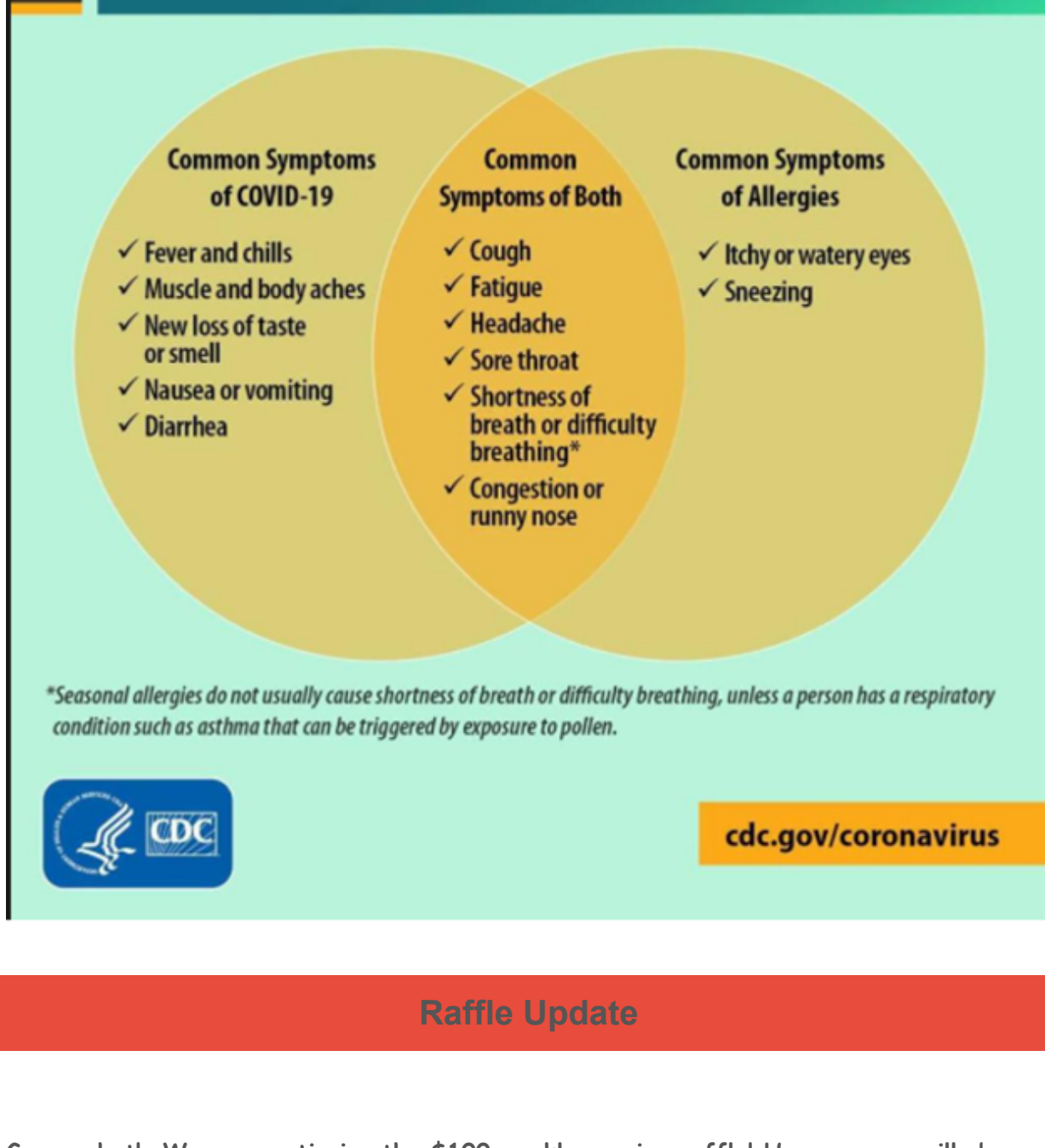
COVID Data Tracker

CDC's home for COVID-19 data. Visualizations, graphs, and data in one easy-to-use website.



www.cfsny.org

COVID vs Allergies



Raffle Update

Guess what! We are continuing the \$100 weekly vaccine raffle! However, we will be NOW be selecting from staff who have had their Booster vaccine. So please send to hvacstats@cfsny.org proof of Booster so that we can enter you into the raffle! Scroll to the bottom to see if you have won! Get in touch with us to let us know if you would like an e-gift card or a gift card mailed!

COVID-19 Boosters - Have You Had Your Booster?

PFIZER-BIONTECH	MODERNA	J&J (JANSSEN)
5 MONTHS SINCE COMPLETING THE PRIMARY SERIES AND YOU ARE	5 MONTHS SINCE COMPLETING THE PRIMARY SERIES AND YOU ARE	2 MONTHS SINCE COMPLETING THE PRIMARY VACCINATION AND YOU ARE
AGE 12+	AGE 18+	AGE 18+

ELIGIBLE INDIVIDUALS MAY CHOOSE WHICH BRAND THEY RECEIVE. BUT ONLY PFIZER-BIONTECH CAN BE USED AS A BOOSTER IN THOSE AGE 12-17.

SAVE LIVES. GET VACCINATED TODAY!



Getting vaccinated is the first step. However, in order to continue to fight the virus, we need to get the Booster as often as is clinically recommended. Being six months without having a booster can reduce your immunity. If you have had Pfizer vaccine, it is recommended that you get your booster five months after your last dose.

COVID-19 vaccines and boosters are offered free for people who are living in the U.S.—even those without health insurance! Take advantage and get your booster shot if eligible.

Both governing bodies in NY and NJ have begun to ask for information on Boosters for staff. As a result, upon getting your booster shot, email your updated vaccine card to hvacstats@cfsny.org



NY Booster Doses Appointment Finder

Maximize your protection against COVID-19. Free booster shots are widely available statewide for eligible New Yorkers.

[covid19vaccine.health...](https://covid19vaccine.health.ny.gov)

NEW JERSEY COVID-19 Information Hu

NJ Vaccine Appointment Finder (Including Boosters)

Find and schedule a vaccine appointment at New Jersey vaccination locations near you.

All individuals aged 12 and older who live, work, or study in New Jersey are eligible for COVID-19 vaccines.

covid19.nj.gov

New Yorkers can get \$100 for getting their first dose or booster of the COVID-19 vaccine. The \$100 incentive will be available through February 28, 2022. Get your COVID-19 vaccine today!



COVID-19 Vaccine Incentives - Coronavirus



www.cfsny.org

Get Tested NOW - Click to find out Where

Everyone should get tested now, whether or not you have symptoms or are at increased risk. Your COVID-19 diagnostic test may be conducted using a nasal swab, oral swab, or saliva sample. If your first COVID test is negative, you should get tested again if you:

- Are concerned about possible exposure
- Have spent time in a large crowd
- Have had exposure to someone with confirmed or possible COVID-19
- Have symptoms

Work in a congregate setting like a nursing home or shelter, or are planning to visit someone at high risk for severe COVID-19 illness

Most results are returned in about 3-5 days and your test results are confidential

Click below to find testing sites near you - in NYC, New Jersey, New York State and Nassau County

NEW YORK CITY COVID-19 Testing - Coronavirus To find a testing site near you, enter your address below, or text "COVID TEST" to 855-48. www1.nyc.gov			
NEW JERSEY How To Get Tested For COVID-19 In New Jersey Locate a testing site near you, learn how to get tested, and find key information about New Jersey's testing program and related resources. covid19.nj.gov	NEW YORK STATE Find a Test Site Near You Testing for COVID-19 is widely available throughout New York State. Individuals who have questions about COVID-19 testing should call the New York State COVID-19 Hotline at 1-888-364-3065 or visit the NYSDOH website. covid19.nj.gov	COVID-19 TESTING Nassau County, NY - Official Website nassaucountyny.gov	

Don't Forget - Mask Up! It's required!

OPWDD issued emergency regulations (14 NYCRR §633.26) requiring all agencies providing services or operating facilities that are certified or operated by OPWDD to require all staff, volunteers, contractors, vendors, visitors and individuals receiving services to wear appropriate face coverings consistent with any directives issued by OPWDD and consistent with guidance from the Centers for Disease Control and Prevention (CDC), to slow the spread of COVID-19 and to protect the individuals served by OPWDD and OPWDD providers and the staff that support them. CDC guidelines, in accordance with OSHA standards, has clarified that cloth masks are not considered Personal Protective Equipment (PPE). **Surgical masks, KN95s and N95 are "typically cleared by the US Food and Drug Administration" and are the appropriate "masks/face coverings" to be used as PPE.**

We have appropriate masks available, please reach out to your direct supervisor to coordinate getting these masks.

For NY Community Staff, you can visit our locations to pick up masks on the following days:

Bronx office Wednesdays 9am - 3pm
Floral Park office Thursdays 10am - 3pm
Staten Island office Wednesdays 10am - 2pm***
Manhattan office Fridays 10am - 2pm

*****New Staten Island Office Location - 800 Annadale Rd Staten Island NY 10312**

Here are some reasons to continue to wear a mask during non-work time.



- you have higher-risk loved ones you visit or live with
- you're not fully vaccinated
- you're immunocompromised, even if fully vaccinated
- you have an underlying medical condition that increases your risk of severe COVID-19
- you have a job that requires close contact with the public
- you'll attend a large gathering
- you take public transportation
- you take care of someone with the COVID-19 virus or symptoms, or someone recently exposed to COVID-19.



WINNER OF THE \$100 GIFT CARD

Jasmine Adams
NY Residential



Special thanks to Arnaldo Giraldo for translating the newsletter into Spanish!

To reach out to our newsletter committee with any questions please contact Joanne Cropper jcropper2@cfsny.org, Donna Messina d Messina@cfsny.org or Linda Schellenberg lschellenberg@cfsny.org