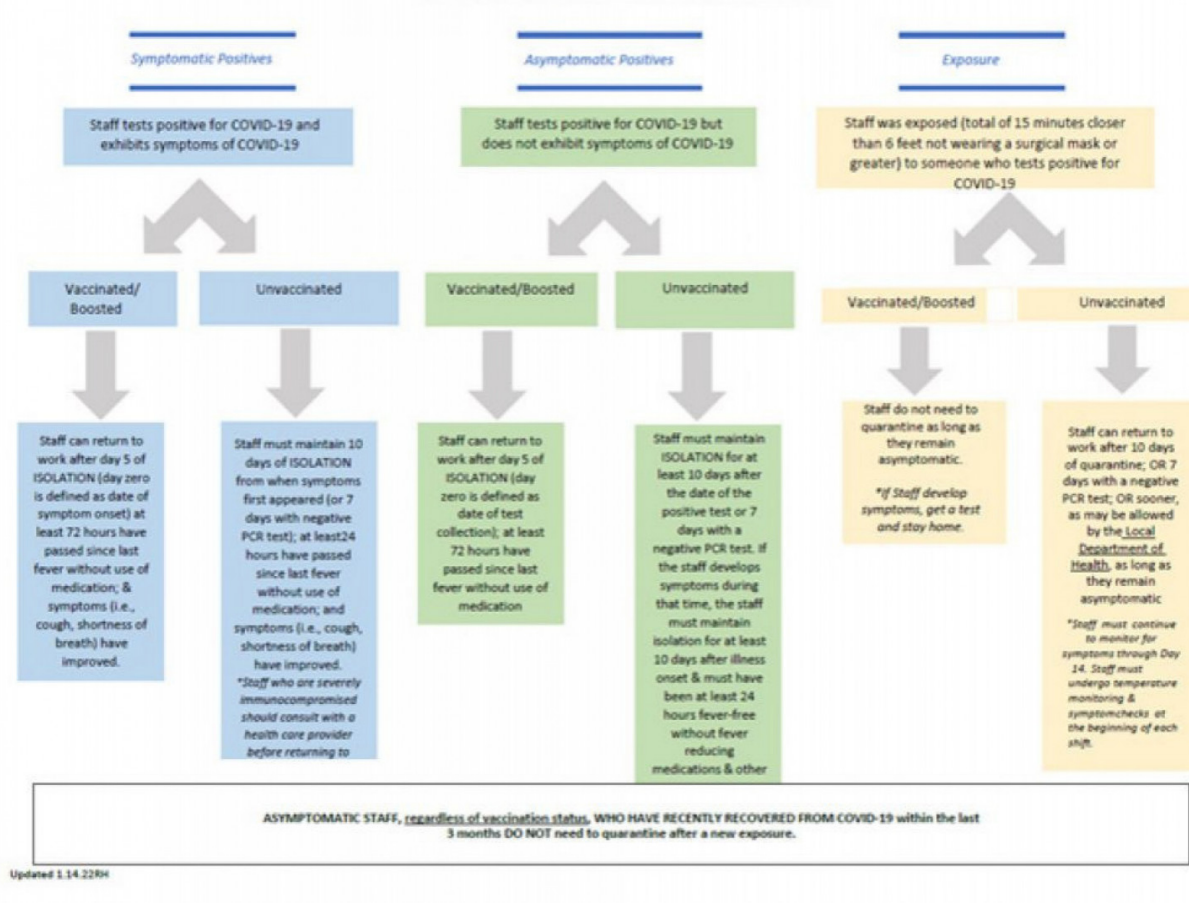


Click for prior Vaxx Matters Newsletters



CFS Staff Return to Work Decision Tree



Click to Download COVID-19 Return to Work Decision Tree



www.cfsny.org

With the recent surge of COVID-19 cases, we have created a return to work decision tree. This document can be helpful to determine what will be needed in each situation. It is important to note that all of the categories require immediate discussion with your supervisor who will then involve HR and Quality Assurance as needed.

COVID-19 Boosters - Have You Had Your Booster?

Getting vaccinated is the first step. However, in order to continue to fight the virus, we need to get the Booster as often as is clinically recommended. Being six months without having a booster can reduce your immunity. If you have had Pfizer vaccine, it is recommended that you get your booster five months after your last dose.

COVID-19 vaccines and boosters are offered free for people who are living in the U.S.—even those without health insurance! Take advantage and get your booster shot if eligible.

Both governing bodies in NY and NJ have begun to ask for information on Boosters for staff. As a result, upon getting your booster shot, email your updated vaccine card to hvacstats@cfsny.org



NY Booster Doses Appointment Finder

Maximize your protection against COVID-19. Free booster shots are widely available statewide for eligible New Yorkers.

[covid19vaccine.health...](#)

NEW JERSEY COVID-19 Information Hu

NJ Vaccine Appointment Finder (Including Boosters)

Find and schedule a vaccine appointment at New Jersey vaccination locations near you.

All individuals aged 12 and older who live, work, or study in New Jersey are eligible for COVID-19 vaccines.

[covid19.nj.gov](#)

Get Tested NOW - Click to find out Where

Everyone should get tested now, whether or not you have symptoms or are at increased risk. Your COVID-19 diagnostic test may be conducted using a nasal swab, oral swab, or saliva sample. If your first COVID test is negative, you should get tested again if you:

- Are concerned about possible exposure
- Have spent time in a large crowd
- Have had exposure to someone with confirmed or possible COVID-19
- Have symptoms
- Work in a congregate setting like a nursing home or shelter, or are planning to visit someone at high risk for severe COVID-19 illness

Most results are returned in about 3-5 days and your test results are confidential

Click below to find testing sites near you - in NYC, New Jersey, New York State and Nassau County

NEW YORK CITY COVID-19 Testing - Coronavirus

To find a testing site near you, enter your address below, or text "COVID TEST" to 855-48.

[www1.nyc.gov](#)

NEW JERSEY How To Get Tested For COVID-19 In New Jersey

Locate a testing site near you, learn how to get tested, and find key information about New Jersey's testing program and related resources.

[covid19.nj.gov](#)

NEW YORK STATE Find a Test Site Near You

Testing for COVID-19 is widely available throughout New York State. Individuals who have questions about COVID-19 testing should call the New York State COVID-19 Hotline at 1-888-364-3065 or visit the NYSDOH website.

[coronavirus.health.ny...](#)

COVID-19 TESTING | Nassau County, NY - Official Website

[nassaucountyny.gov](#)

Don't Forget - Mask Up! It's required!

OPWDD issued emergency regulations (14 NYCRR §633.26) requiring all agencies providing services or operating facilities that are certified or operated by OPWDD to require all staff, volunteers, contractors, vendors, visitors and individuals receiving services to wear appropriate face coverings consistent with any directives issued by OPWDD and consistent with guidance from the Centers for Disease Control and Prevention (CDC), to slow the spread of COVID19 and to protect the individuals served by OPWDD and OPWDD providers and the staff that support them. CDC guidelines, in accordance with OSHA standards, has clarified that cloth masks are not considered Personal Protective Equipment (PPE). **Surgical masks, KN95s and N95 are "typically cleared by the US Food and Drug Administration" and are the appropriate "masks/face coverings" to be used as PPE.**

We have appropriate masks available, please reach out to your direct supervisor to coordinate getting these masks.

For NY Community Staff, you can visit our locations to pick up masks on the following days:

Bronx office Wednesdays 9am - 3pm

Floral Park office Thursdays 10am - 3pm

Staten Island office Wednesdays 10am - 2pm***

Manhattan office Fridays 10am - 2pm

*****New Staten Island Office Location - 800 Annadale Rd Staten Island NY 10312**

Improve How Your Mask Protects You



Improve how your mask protects you



www.cfsny.org



How to Knot and Tuck Your Mask to Improve Fit

The knot and tuck method can be used to make disposable masks fit better. This video can also be viewed at <https://www.cdc.gov/coronavirus/2019-ncov/videos/pre...>



www.cfsny.org



WINNER OF THE \$100 GIFT CARD
Gracelynn Andrews



Special thanks to Arnaldo Giraldo for translating the newsletter into Spanish!

To reach out to our newsletter committee with any questions please contact Joanne Cropper jcropper2@cfsny.org, Donna Messina dmessina@cfsny.org or Linda Schellenberg lschellenberg@cfsny.org