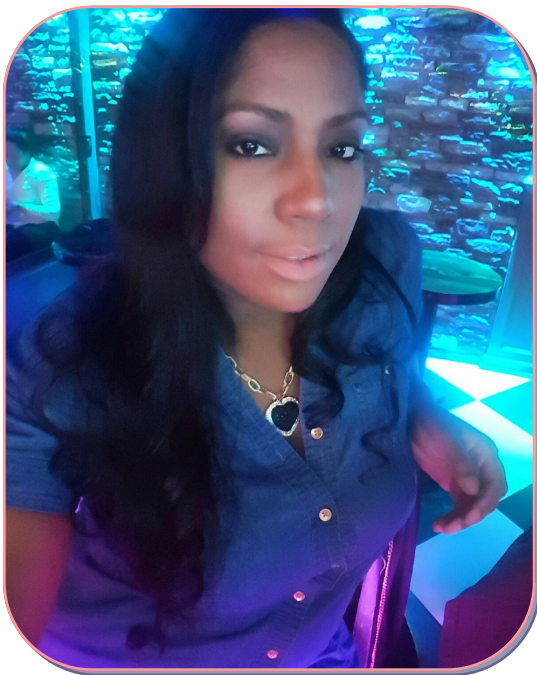


Recognition Insider

Volume 3, Issue 4

May 2017

The Center for Family Support Inc.



Maria Asencion

Maria Asencion has been working with the agency since May 24, 2010 supporting the lives of each participant she has worked with. She has supported the emotional, physical and well-being of each participant.

Competency Area A: Supporting a person's unique capacities, personality and potential

Maria has demonstrated respect for each individual she works with; she gives each the opportunity to express them self without making

judgments. She listens carefully with respect and interest. For Example she has helped an individual with their personal appearance by suggesting appropriate clothing that they may like. When making suggestions, Maria uses a passive tone of voice which makes it easier for participant to be open to accepting advice with a positive attitude.

Competency Area O: Promoting positive behavior and supports

Maria recognizes achievements made by her participants even if they are not big improvements. An individual she works with has a hard time keeping their apartment clean. Maria has encouraged the individual to make small efforts to complete chores so that the living conditions are healthy.

Community Services Supervisor

Melissa Liranzo

Inside this issue:

EOM April	1
Supervisor of the Quarter	2
Admin of the Quarter	3
Previous Mentions	4

Special points of interest:

If you see someone who should be nominated for Employee of the Month mention it to their Supervisor

If you have not received your Awards Certificate, Please Contact Annmarie @ 212-629-7939 ext.210



Arnaldo Giraldo Supervisor of the Quarter



Arnaldo takes pride in his responsibilities as the advocate for the individuals we serve. Arnaldo has a great working relationship with the individuals, his peers at CFS and outside providers. He is often commended for his trustworthiness and efficiency of supports that he provides.

Arnaldo demonstrates most, if not all, areas of core competencies in his provision of service. He demonstrates respect for everyone he encounters. He does his best when assisting individuals with processing any desire and/or support they may need, and come up with a viable solution. He makes sure to tap into the individuals' strengths and preferences when assisting with linkage and referral to new supports. Arnaldo supports the individuals on his case load to use their voice in advocating for themselves. He makes sure to provide assistance with holding others responsible for the individuals' care for anything that they've been tasked to do.

Arnaldo ensures that the health and wellbeing of the individuals is maintained. He participates in interdisciplinary discussions about the health care needs of each person. Arnaldo always maintains a positive attitude towards his peers and the individuals. He is always respectful and professional. It shows in his tone when speaking, in his demeanor as well as his documentation. Arnaldo has great leadership and serves as a mentor to his peers. He readily shares information and provides assistance when asked without hesitation. Arnaldo is a fine example of the good service we provide as an agency.

Director of MSC

Diana Collins



Raniyah Funn Admin of the Quarter



Competency area I: Exhibiting Professional Behavior

Raniyah Funn has been with CFS for 8 months. She has been a tremendous asset to the Admin department. She is very organized and reliable. Her ability and enthusiasm to learn quickly was conducive to her being able to jump right in to her position.

Raniyah is interchangeable in the Admin department and is willing and able to cover for any of her teammates no matter the task. She is always available to step in if a team member is unable to for any reason. If she doesn't have an answer to a question, she will make sure to find the answer.

Her soft-spoken and professional demeanor is greatly appreciated and very valuable in dealing with a displeased caller or visitor. Her ability to problem solve or seek assistance in problem solving when she is unable to is a vast quality.

Overall, it is a pleasure to have Raniyah as a part of my team and to know that I am able to depend on her.

Administrative Assistant

Ilene Hales

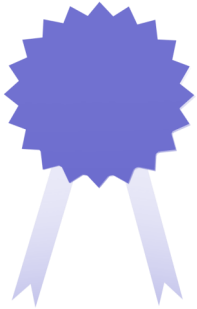
Annmarie Malcolm



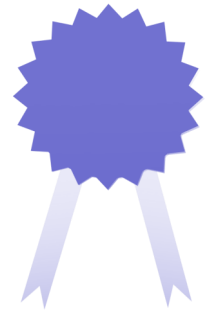


The Center for Family Support Inc.

EMPLOYEE OF THE MONTH WINNERS- 2017



<u>Month</u>	<u>Name</u>	<u>Department</u>
January	Annie Sistrunk	Kelly
February	Denise Myers	Riverdale
March	Soo Kang	135th
April	Maria Asencion	Com Hab

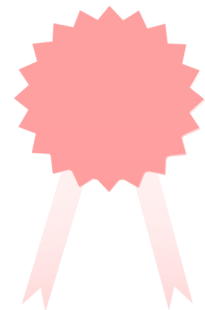
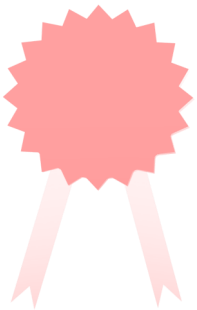


Supervisor of the Quarter

Arnaldo Giraldo

Admin of the Quarter

Raniyah Funn



Employee of The Month Nominees-2017

January

Annette Aponte	Medical Coordinator
Soo Kang	135th
Denise Myers	Riverdale
Jenny McNally	Bryant
Carles Van Riel	Lincoln
Sunde Lovett	Crotona

February

Loude Lorjuste	Homecare
Allison Birot	Livonia
Steven Houston	Hale
Janiquwa Morrison	Broadway
Wendy Harry	Liberty

March

Janelle Jones	Crotona
Migdalia Rivera	Simpson
Myles Surland Van Tams	Crotona
Floyd R. Calder	Sunset

April

Michael Diaz	Com Hab
Migdalia Rivera	Simpson
Joyce Moulton	Com Hab
Angelique Gomez	Com Hab
Mirsada Oliveras	Homecare

